

August 2009

AFI SPOTLIGHT ON SAFETY



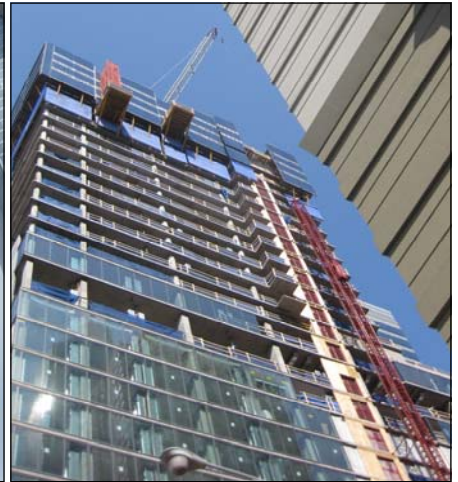
EDGE PROTECTION SYSTEM SUCCESSFUL ON THREE CHICAGO HIGH RISES



Walton on The Park



One Museum Park West



505 N. State St.

PROJECT HIGHLIGHTS

- ◆ System can be phased gradually into schedule (See OMPW), or installed in one duration (Walton).
- ◆ No loss of material or equipment during severe weather.
- ◆ Fully enclosed exterior stair towers allow access at any point of the cycle.
- ◆ Wide, stable lookout platforms hydraulically raised with system, no crane time or additional reshoring required.
- ◆ Safer PT installation, reduced winter conditions.
- ◆ Stackable panels easily removed from building, even at extreme heights (620 ft).

After three high rises, 1,360 vertical feet, and 123 stories of fully encapsulated cast in place construction, the verdict is clear: The EFCO Edge Protection Safety System has been a tremendous success. Adjustable Forms would like to sincerely thank Bovis Lend Lease for their substantial investment to keeping the safest working environment possible. It is safe to say that the implementation of the EFCO EPS system met and exceeded Bovis and Adjustable's lofty expectations.

Through a rough 2008-2009 winter, compact downtown sites, and three distinct floor plates, the system worked just as we had expected. Each project maintained a safe, fully enclosed, weather-protected enclosure with perimeter fall hazards virtually eliminated. All three projects featured post tensioned flat plate construction, requiring substantial work at the perimeter with stressing, burning, and patching PT cables. Additionally, grinding and patching to accommodate window systems was also an important safety concern. Despite the magnitude of high-risk work on these busy downtown sites, Adjustable was able to eliminate much of the fall exposure and material loss risks.

Adjustable Forms looks forward to working with Bovis and EFCO in the future and continuing our success with the EPS system. We truly appreciate being a part of Bovis' efforts in maintaining the highest standards of safety, and EFCO's commitment to providing the best enclosure system available.

August 2009



AFI SPOTLIGHT ON SAFETY – EDGE PROTECTION SYSTEM

One Museum Park West

PROJECT DETAILS

GENERAL CONTRACTOR
BOVIS LEND LEASE

AREA
900,000 SF

HEIGHT
620 FT / 54 STORIES

Easily the most challenging application of the EPS enclosure system, OMPW exemplified the versatility of the system when utilized on an irregularly shaped floor plate. With balcony extensions occurring every seven levels, the system had to not only accommodate the segmented perimeter, but also a constantly changing layout. Even during winter months working with significantly less daylight, enclosed lower floors maintained abundant natural light through the polycarbonate window strips for stripping operations. Additional patching and grinding work at slab edges and perimeter columns was performed much more safely than a comparable cable and net perimeter system.

Adjacent construction in the Museum Park area have had major problems with weather, particularly due to the notoriously strong winds coming from Lake Michigan. Maintaining a sealed perimeter to the top of the structure eliminated fall risks and construction materials from coming off the building. On a particularly bad storm, wind gusts were reported to reach as high as 90 mph. Despite these extreme conditions, the system remained in tact and no materials were blown off the deck.



August 2009



AFI SPOTLIGHT ON SAFETY – EDGE PROTECTION SYSTEM

Walton on The Park

PROJECT DETAILS

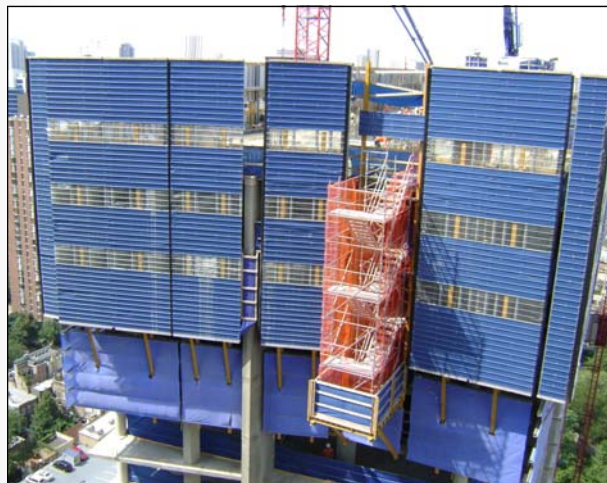
GENERAL CONTRACTOR
BOVIS LEND LEASE

AREA
561,400 SF

HEIGHT
360 FT / 32 STORIES

Unlike One Museum Park West and 505 N. State St., Walton on the Park's EPS system was erected and installed all at once, rather than phased into the schedule. Complete installation at level 12 took just 9 days to fully install 36 perimeter gangs. The panels were hydraulically lifted during each 4 day cycle without the use of the tower crane. Access to the working deck was easily accomplished with a perimeter stair tower enclosed in safety netting at both the east and west ends of the floor plate. Material loading and unloading was particularly efficient utilizing the two material lookouts. At level 25, changes in the floor plate required a revised layout to maintain the full enclosure to the top of the structure.

At Walton, the EPS system provided protection for neighboring pedestrian and vehicular traffic at Chicago's Washington Square Park. Upon installation of the system at the twelfth level, only one weather day was attributed to excessive winds.



August 2009



AFI SPOTLIGHT ON SAFETY – EDGE PROTECTION SYSTEM

505 N. State St.

PROJECT DETAILS

GENERAL CONTRACTOR
BOVIS LEND LEASE

AREA
435,000 SF

HEIGHT
380 FT / 37 STORIES

Crucial to the project on Chicago's busy State St. was a sound perimeter enclosure. The adjacent American Medical Association Building, featuring a glass roofed atrium, also required strong protection. EPS panels built off-site at Adjustable's yard were phased into the superstructure schedule to accommodate floor plate step backs at level 19. The fully enclosed perimeter stair towers allowed access to the upper 4 levels of the structure. Post tension cables were stressed, burned, and patched in a fully enclosed environment without any exposure to open edges.

During winter months, the EPS system provided additional benefits of reducing winter condition costs and maintaining a more consistent temperature below the working deck. During framing of the working deck, the system allowed for full protection, even during 3 day cycles, and secure tie-off locations.

