

Chicago, Illinois

10 E. Delaware

10 E. Delaware
Chicago, IL 60610



Adjustable Forms began work on level 15 of the 37 story condominium tower. Located in the Gold Coast neighborhood across from Adjustable's Walton on the Park project, 10 E. Delaware. The tower features 121 high end luxury condominiums and a classic design.

The perimeter of the building consists of architectural concrete, within elaborate reveals and detailing at all perimeter walls. The project is constructed on a 5 day schedule, with particular attention required at the perimeter wall systems. Special attention is required at the top of the building, where an elaborate cornice detail is created in cast-in-place concrete. Adjustable is creating special forms to accommodate the special condition. 10 E. Delaware is just one of many Lucien LaGrange towers Adjustable Forms

has provided its concrete services for.

Client

The Prime Group

General Contractor

Evans Construction

Architect

Lucien LaGrange

Structural Engineer

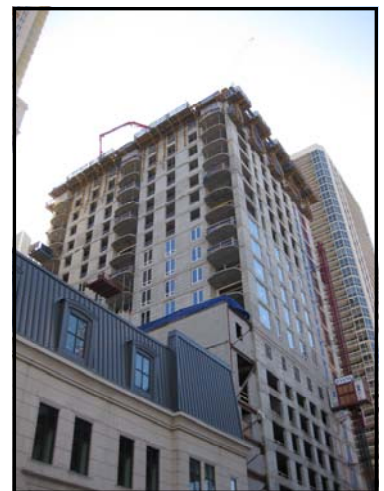
Chris Stefanos & Associates

Area

996,000 square feet

Completion

2009



Adjustable Forms Inc.
One E. Progress Rd.
Lombard, IL 60148

www.adjustableforms.com

Phone: (630) 953-8700
Fax: (630) 953-8788