

Chicago, Illinois

# 1720 S. Michigan

1720 S. Michigan Ave.  
Chicago, IL 60616



1720 S. Michigan is another "Chicago Loft" style condominium complex, with exposed concrete columns, interior walls, and ceilings. The building is located in the south loop, only a few minutes walk from nearby Grant Park. Units feature large terraces that expose ribbons of concrete.

There are a total of 198 condominiums in the structure's 33 levels. The ground level features 8,000 square feet of retail and commercial space, including a full-service restaurant. The six levels of parking are tucked behind the building, hidden from view.

For the concrete decking formwork, flying forms were utilized. The flat plate structural design and column layout was ideal for this truss system, and allowed Adjustable Forms to rapidly cycle through the three levels of shoring.

**Client**

CMK Development Corporation

**General Contractor**

Bovis Lend Lease

**Architect**

Brininstool & Lynch

**Structural Engineer**

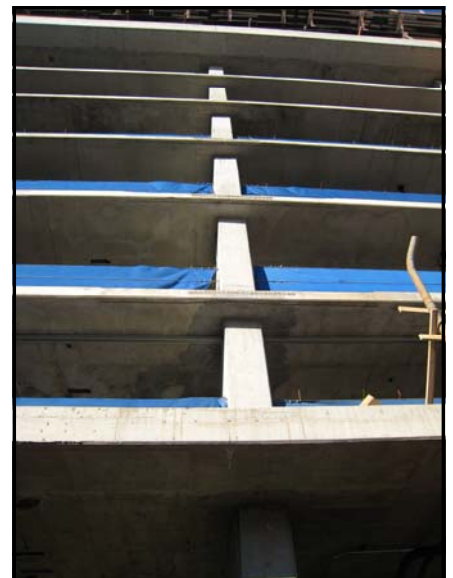
C.E. Anderson & Associates

**Concrete Volume**

28,615 cubic yards

**Completion**

2008



Adjustable Forms Inc.  
One E. Progress Rd.  
Lombard, IL 60148

[www.adjustableforms.com](http://www.adjustableforms.com)

Phone: (630) 953-8700  
Fax: (630) 953-8788

Chicago, Illinois

# 1720 S. Michigan

1720 S. Michigan Ave.  
Chicago, IL 60616

**ADJUSTABLE FORMS**  
*Concrete Construction Since 1930*



Adjustable Forms Inc.  
One E. Progress Rd.  
Lombard, IL 60148

[www.adjustableforms.com](http://www.adjustableforms.com)

Phone: (630) 953-8700  
Fax: (630) 953-8788