

Chicago, Illinois

235 W. Van Buren

235 W. Van Buren St.
Chicago, IL 60610



Located in Downtown Chicago's Financial District, this 48-story condominium will cater especially to people working in the city's west loop. Residential units start on level 14 and continue up to the 44th level. The tower's 714 units will be accompanied by 700 parking spaces.

235 W. Van Buren is the largest Downtown Chicago condominium project since the mid 1970's. Surrounded by both the Congress Parkway and Chicago River, the site will offer unobstructed views.

The project features an extensive amount of architectural exposed concrete, both on the interior and exterior façade. Despite the high finish specifications, Adjustable has been able to maintain a 4 day cycle of over 20,000 square feet per level.

Client

235 W. Van Buren Development Corp.

General Contractor

Bovis Lend Lease

Architect

Perkins & Will

Structural Engineer

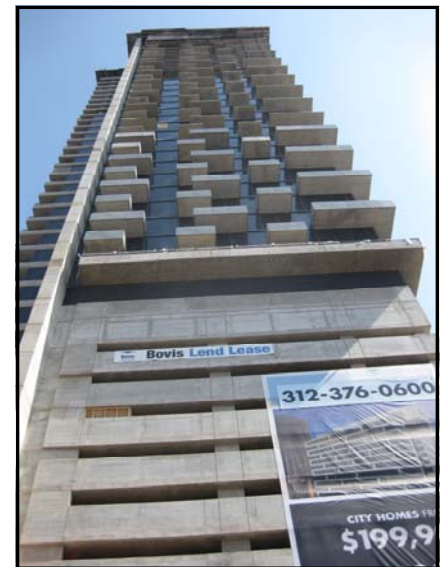
TYLK Gustafson Reckers Wilson Andrews, LLC

Area

996,000 square feet

Completion

2009



Adjustable Forms Inc.
One E. Progress Rd.
Lombard, IL 60148

www.adjustableforms.com

Phone: (630) 953-8700
Fax: (630) 953-8788