

Chicago, Illinois

FBI Chicago Division Field Office

2111 W. Roosevelt Rd.
Chicago, IL 60608



Client

Federal Bureau of Investigation

General Contractor

Bovis Lend Lease

Architect

Lohan Caprile Goettsch Architects

Structural Engineer

Halvorson Kaye Structural Engineers

Area

800,000 square feet

Concrete Volume

9,912 cubic yards

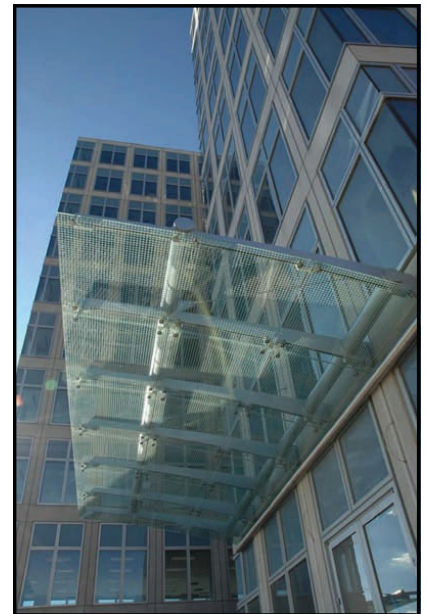
Completion

2006

Adjustable Forms built the Federal Bureau of Investigation's Chicago Division Field Office on Chicago's far west side. The new office facility features 3 buildings, including a 10-story office building and an attached parking structure. The parking garage consists of 2 levels of above grade parking, and 2 additional levels below grade.

The exterior of the office tower features architectural precast concrete combined with blue glazing. At the main entry is a 2-level atrium, with a cantilevered glass awning as its focal point. The office portion is oval shaped, with the garage extending just to the south.

The FBI Chicago Division Field Office earned a substantial number of awards upon completion. Midwest Construction Magazine named the office the Commercial Large Project of the Year. The American Institute of Architects— Chicago awarded the complex with a 2006 Distinguished Building Award. The Chicago Building Congress recognized the building with its 2007 Award of Merit—New Construction.



Adjustable Forms Inc.
One E. Progress Rd.
Lombard, IL 60148

www.adjustableforms.com

Phone: (630) 953-8700
Fax: (630) 953-8788