

Chicago, Illinois

# One Museum Park West

1201 S. Prairie Ave.  
Chicago, IL 60605



The second tower of a massive residential complex, One Museum Park West is a 54-story, 620 ft tower in Chicago's booming Museum Park complex. This area has seen the most growth of any residential area in Chicago, and Adjustable Forms continues to cater to this area.

Adjustable Forms will build the tower with a top-down approach, bringing the superstructure simultaneously with the five lower parking levels.

The structural frame is a flat-plate, post tensioned design. The floor plate is anything but rectangular, with exterior slab edges featuring an array of curves

and angles. The green exterior glass follows the curving exterior, providing unobstructed views to Lake Michigan, as well as the Museum Park area. Parking will be provided on the lower levels of the tower.



#### Client

Enterprise Companies

#### General Contractor

Bovis Lend Lease

#### Architect

Pappageorge/Haymes, Ltd.

#### Structural Engineer

Samartano & Company

#### Area

900,000 square feet

#### Completion

2009

Adjustable Forms Inc.  
One E. Progress Rd.  
Lombard, IL 60148

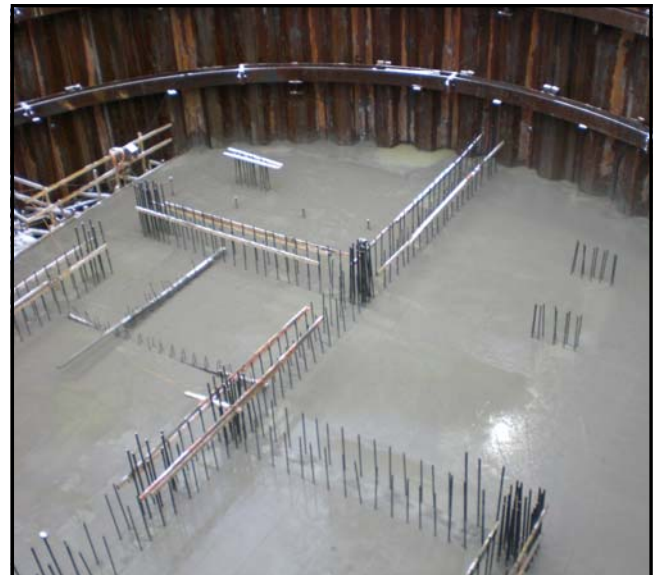
[www.adjustableforms.com](http://www.adjustableforms.com)

Phone: (630) 953-8700  
Fax: (630) 953-8788

Chicago, Illinois

# One Museum Park West

1201 S. Prairie Ave.  
Chicago, IL 60605



Adjustable Forms Inc.  
One E. Progress Rd.  
Lombard, IL 60148

[www.adjustableforms.com](http://www.adjustableforms.com)

Phone: (630) 953-8700  
Fax: (630) 953-8788